



# **WORK AND ASSET MANAGEMENT, V2.1.1**

## **5.7.1.3 WAM.v2.1.Manage Physical Inventory**

Creation Date: December 05, 2015

Last Updated: November 25, 2018

**ORACLE®**

**Copyright © 2018, Oracle. All rights reserved.**

This document is provided for information purposes only and the contents hereof are subject to change without notice. This document is not warranted to be error-free, nor subject to any other warranties or conditions, whether expressed orally or implied in law, including implied warranties and conditions of merchantability or fitness for a particular purpose. We specifically disclaim any liability with respect to this document and no contractual obligations are formed either directly or indirectly by this document. This document may not be reproduced or transmitted in any form or by any means, electronic or mechanical, for any purpose, without our prior written permission. Oracle, JD Edwards, PeopleSoft, and Siebel are registered trademarks of Oracle Corporation and/or its affiliates. Other names may be trademarks of their respective owners.

---

# Contents

BRIEF DESCRIPTION .....	4
BUSINESS PROCESS MODEL PAGE 1.....	5
BUSINESS PROCESS MODEL PAGE 2.....	6
DETAIL BUSINESS PROCESS MODEL DESCRIPTION .....	7
TEST DOCUMENTATION RELATED TO THE CURRENT PROCESS .....	17
DOCUMENT CONTROL.....	18
ATTACHMENTS .....	19
<i>Physical Inventory Header</i> .....	19

---

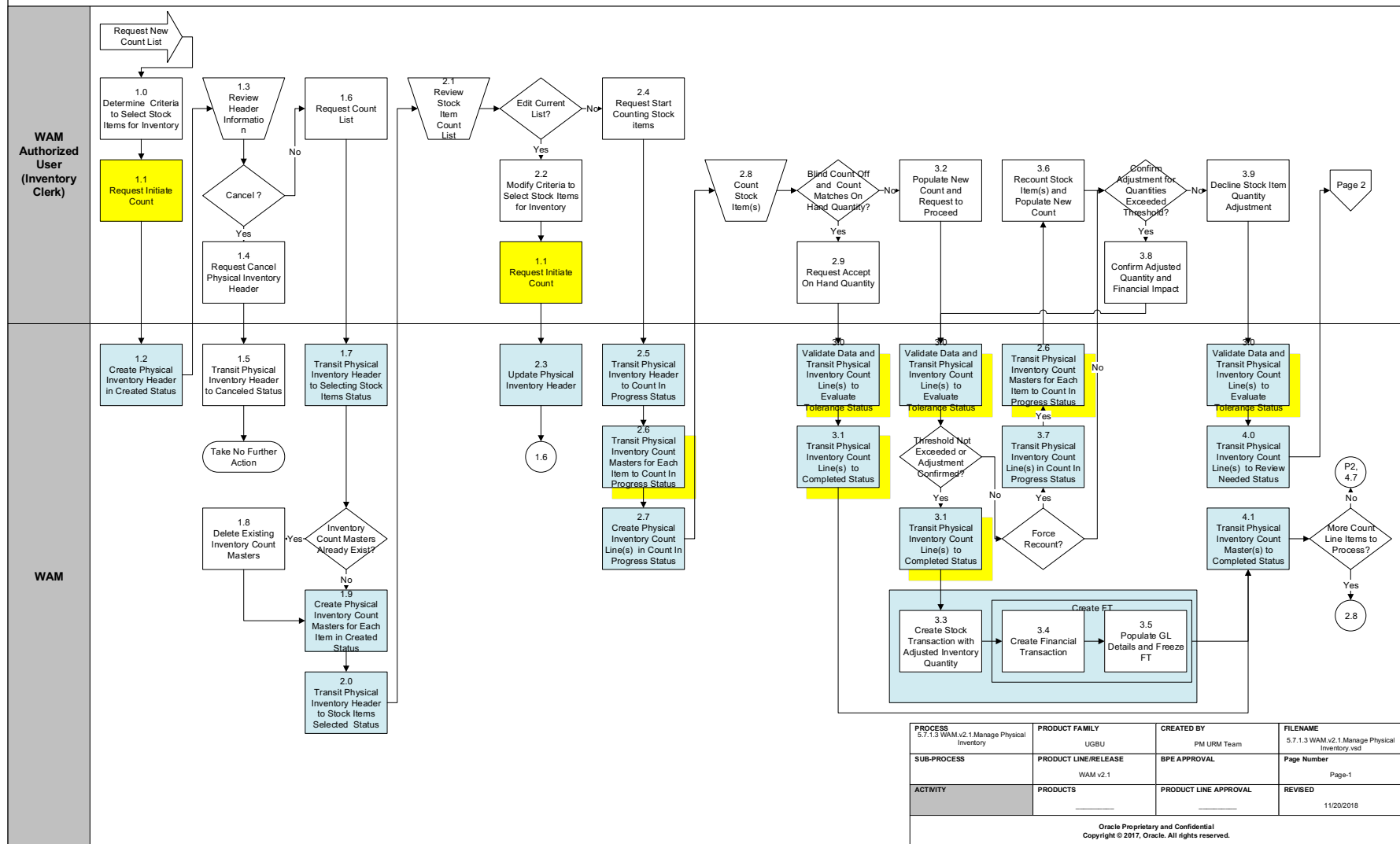
## Brief Description

**Business Process:** 5.7.1.3 WAM.v2.1.Manage Physical Inventory  
**Process Type:** Process  
**Parent Process:** 5.7.1 WAM.v2.1.Manage Inventory  
**Sibling Processes:** 5.7.1.1 WAM.v2.1.Manage Stock Items, 5.7.1.2 WAM.v2.1.Request, Issue and Return Materials, 5.7.1.4 WAM.v2.1.Transfer Stock Items, 5.7.1.5 WAM.v2.1.Manage Quantity and Price Adjustments

This process when WAM Authorized User wants to check that inventory quantities in a storerooms match records in the application. Clerk performs physical inventory and records counts.

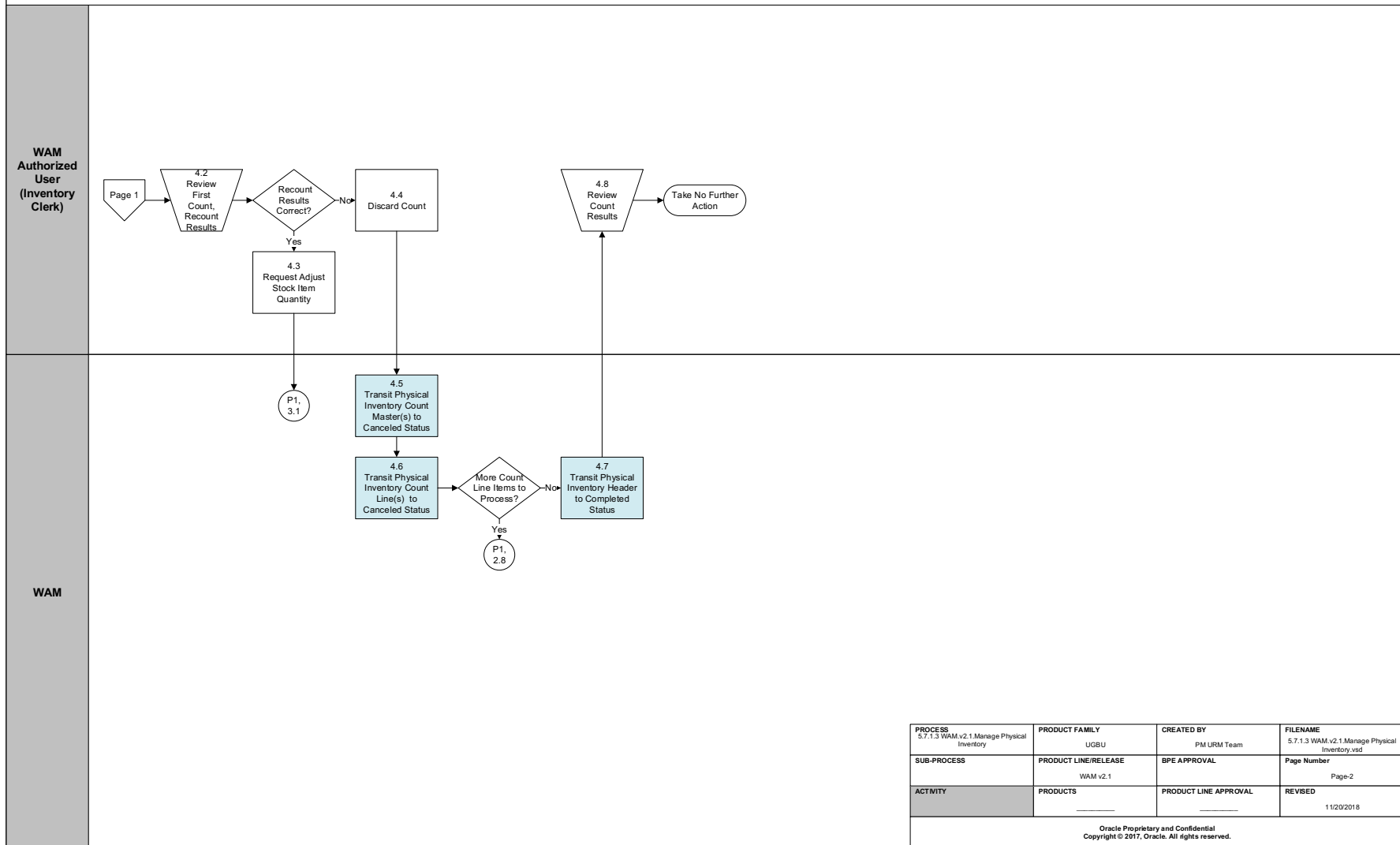
# Business Process Model Page 1

## 5.7.1.3 WAM.v2.1.Manage Physical Inventory



## Business Process Model Page 2

### 5.7.1.3 WAM.v2.1. *Manage Physical Inventory*



PROCESS	PRODUCT FAMILY	CREATED BY	FILENAME
5.7.1.3 WAM.v2.1.Manage Physical Inventory	UGBU	PM URM Team	5.7.1.3 WAM.v2.1.Manage Physical Inventory.vsd
SUB-PROCESS	PRODUCT LINE/RELEASE	BPE APPROVAL	Page Number
	WAM v2.1		Page-2
ACTIVITY	PRODUCTS	PRODUCT LINE APPROVAL	REVISED
			11/20/2018

Oracle Proprietary and Confidential  
Copyright © 2017, Oracle. All rights reserved.

## Detail Business Process Model Description

### 1.0 Determine Criteria to Select Stock Items for Inventory

**Actor/Role:** WAM Authorized User (Inventory Clerk)

**Description:** Inventory Clerk determines criteria to select stock items for inventory.

**Configuration required (Y/N)**

**Entities to Configure:**

Storeroom
Type of Inventory

### 1.1 Request Initiate Count

**Actor/Role:** WAM Authorized User (Inventory Clerk)

**Description:** Inventory Clerk makes a request to initiate count.

### 1.2 Create Physical Inventory Header in Created Status

**Actor/Role:** WAM

**Description:** WAM creates physical inventory header in created state.

**Process Plug-in enabled (Y/N)**

**Available Algorithm(s):**

W1-PIHDINFO (Physical Inventory Header Information)
W1-DEFBLCNT (Default Blind Count)
W1-DEFUSER (Default User Information)
W1-VALPIHDR (Validate Physical Inventory Header)
W1-RTSTKITM (Retrieve Matching Stock Items)

**Business Object (Y/N)**

**Business Object**

W1-PIHeader
-------------

### 1.3 Review Header Information

**Actor/Role:** WAM Authorized User (Inventory Clerk)

**Description:** Inventory Clerk review physically inventory header created.

### 1.4 Request Cancel Physical Inventory Header

**Actor/Role:** WAM Authorized User (Inventory Clerk)  
**Description:** Inventory Clerk makes a request to cancel physical inventory header.

**1.5 Transit Physical Inventory Header to Canceled Status**

**Actor/Role:** WAM  
**Description:** WAM transitions physical inventory header to canceled state.

Business Object (Y/N)	Business Object
	W1-PIHeader

**1.6 Request Count List**

**Actor/Role:** WAM Authorized User (Inventory Clerk)  
**Description:** Inventory Clerk makes a request count list of items.

**1.7 Transit Physical Inventory Header to Selecting Stock Items Status**

**Actor/Role:** WAM  
**Description:** WAM transitions physical inventory header to Selecting Stock Items state.

Process Plug-in enabled (Y/N)	Available Algorithm(s):
	W1-GENPICMSR (Generate Physical Inventory Count Masters)

Business Object (Y/N)	Business Object
	W1-PIHeader

**1.8 Delete Existing Inventory Count Masters**

**Actor/Role:** WAM  
**Description:** WAM deletes inventory count masters are already exist in the system.

Business Object (Y/N)	Business Object
	W1-PIHeader
	W1-PICountMaster

**1.9 Create Physical Inventory Count Masters for Each Item in Created Status**



**Actor/Role:** WAM

**Description:** WAM creates physical inventory count masters for each item in Created status.

<b>Process Plug-in enabled (Y/N)</b>	<b>Available Algorithm(s):</b>	W1-GENPICMSR ( Generate Physical Inventory Count Masters)
		W1-PICMINFO ( Physical Inventory Count Master Information)

<b>Business Object (Y/N)</b>	<b>Business Object</b>	W1-PIHeader
		W1-PICountMaster

## 2.0 Transit Physical Inventory Header to Stock Items Selected Status

**Actor/Role:** WAM

**Description:** WAM transits physical inventory header to Stock Item Selected state.

<b>Process Plug-in enabled (Y/N)</b>	<b>Available Algorithm(s):</b>	W1-TRPHDRCA (Transition Physical Inventory Header self to Canceled)
--------------------------------------	--------------------------------	---

<b>Business Object (Y/N)</b>	<b>Business Object</b>	W1-PIHeader
		W1-PICountMaster

## 2.1 Review Stock Item Count List

**Actor/Role:** WAM Authorized User (Inventory Clerk)

**Description:** Inventory Clerk reviews stock item count list.

## 2.2 Modify Criteria to Select Stock Items for Inventory

**Actor/Role:** WAM Authorized User (Inventory Clerk)

**Description:** Inventory Clerk modifies criteria to select stock items for inventory.

## 2.3 Update Physical Inventory Header

**Actor/Role:** WAM

**Description:** WAM updates physical inventory header based on the criteria selected.

<b>Process Plug-in enabled (Y/N)</b>	<b>Available Algorithm(s):</b>	W1-PIHDINFO (Physical Inventory Header Information)
		W1-DEFBLCNT (Default Blind Count)
		W1-DEFUSER (Default User Information)
		W1-VALPIHDR (Validate Physical Inventory Header)
		W1-RTSTKITM (Retrieve Matching Stock Items)

<b>Business Object (Y/N)</b>	<b>Business Object</b>	W1-PIHeader
------------------------------	------------------------	-------------

#### 2.4 Request Start Counting Stock items

**Actor/Role:** WAM Authorized User (Inventory Clerk)

**Description:** Inventory Clerk makes a request to start counting stock items.

#### 2.5 Transit Physical Inventory Header to Count In Progress Status

**Actor/Role:** WAM

**Description:** WAM transits physical inventory header to Count In Progress state.

<b>Process Plug-in enabled (Y/N)</b>	<b>Available Algorithm(s):</b>	W1-TRPIMSRCN ( Transition all Physical Inventory Count Masters to Count in Progress)
		W1-TRPIHDRC ( Transition Physical Inventory Header self to Completed)

<b>Business Object (Y/N)</b>	<b>Business Object</b>	W1-PIHeader
------------------------------	------------------------	-------------

#### 2.6 Transit Physical Inventory Count Masters for Each Item to Count In Progress Status

**Actor/Role:** WAM

**Description:** WAM transits physical inventory count masters for each item to Count in Progress state.

<b>Process Plug-in enabled (Y/N)</b>	<b>Available Algorithm(s):</b>	W1-GENPICNTL ( Generate Physical Inventory Count Lines)
		W1-TRPIMSTC ( Transition Physical Inventory Count Master self to Completed)

<b>Business Object (Y/N)</b>	<b>Business Object</b>	W1-PICountMaster
------------------------------	------------------------	------------------

**2.7 Create Physical Inventory Count Line(s) in Count In Progress Status****Actor/Role:** WAM**Description:** WAM creates physical inventory count line(s) in Count in Progress state. During this state, WAM checks whether the asset specification matches the stock item specification.

<b>Process Plug-in enabled (Y/N)</b>	<b>Available Algorithm(s):</b>	W1-GENPICNTL (Generate Physical Inventory Count Lines)
		W1-PICLINFO(Physical Inventory Count Line Information)
		W1-CHKASTSPC (Check Whether Asset Spec matches with Stock item Spec)
		W1-CALSYSCNT (Calculate and set System Count)

<b>Business Object (Y/N)</b>	<b>Business Object</b>	W1-PICountMaster
		W1-PICountLine

**2.8 Count Stock Item(s)****Actor/Role:** WAM Authorized User (Inventory Clerk)**Description:** Inventory Clerk physically counts each stock item.**2.9 Request Accept On Hand Quantity****Actor/Role:** WAM Authorized User (Inventory Clerk)**Description:** Inventory Clerk accepts the count made through physical check.**3.0 Validate Data and Transit Physical Inventory Count Line(s) to Evaluate Tolerance Status****Actor/Role:** WAM**Description:** WAM validates count data and transits physical inventory count line(s) to Evaluate Tolerance Status state.

<b>Business Object (Y/N)</b>	<b>Business Object</b>	W1-PICountLine
------------------------------	------------------------	----------------

**3.1 Transit Physical Inventory Count Line(s) to Completed Status**

**Actor/Role:** WAM

**Description:** WAM transits physical inventory count line(s) to Complete state.

**Process Plug-in enabled (Y/N)**      **Available Algorithm(s):**

**Business Object (Y/N)**                      **Business Object**                     

### 3.2 Populate New Count and Request to Proceed

**Actor/Role:** WAM Authorized User (Inventory Clerk)

**Description:** Inventory Clerk populates new count made based on physical check and makes a request to proceed.

### 3.3 Create Stock Transaction with Adjusted Inventory Quantity

**Actor/Role:** WAM

**Description:** WAM creates stock transaction with adjustments to inventory quantity based on the physical inventory count.

**Process Plug-in enabled (Y/N)**      **Available Algorithm(s):**

**Business Object (Y/N)**                      **Business Object**                     

### 3.4 Create Financial Transaction

**Actor/Role:** WAM

**Description:** WAM creates Financial Transaction for the new adjusted inventory quantity.

**Process Plug-in enabled (Y/N)**      **Available Algorithm(s):** W1-CRIADJSFT (Create Inventory Adjustment Stock and Financial Transactions)

**Business Object (Y/N)**              **Business Object**              W1-PICountLine

**3.5 Populate GL Details and Freeze FT**

**Actor/Role:**      WAM

**Description:**      WAM populates GL details and freezes Financial Transaction.

**Process Plug-in enabled (Y/N)**      **Available Algorithm(s):** W1-CRIADJSFT (Create Inventory Adjustment Stock and Financial Transactions)

**Business Object (Y/N)**              **Business Object**              W1-PICountLine

**3.6 Recount Stock Item(s) and Populate New Count**

**Actor/Role:**      WAM Authorized User (Inventory Clerk)

**Description:**      Inventory Clerk recounts stock item(s) and populates new count.

**3.7 Transit Physical Inventory Count Line(s) in Count In Progress Status**

**Actor/Role:**      WAM

**Description:**      WAM transits physical inventory count line(s) in Count in Progress state.

**Process Plug-in enabled (Y/N)**      **Available Algorithm(s):** W1-CALSYSCNT ( Calculate and set System Count)

**Business Object (Y/N)**              **Business Object**              W1-PICountLine

**3.8 Confirm Adjusted Quantity and Financial Impact**

**Actor/Role:** WAM Authorized User (Inventory Clerk)

**Description:** WAM Authorized User confirms adjusted quantity and confirms financial impact on adjusted quantity.

### **3.9 Decline Stock Item Quantity Adjustment**

**Actor/Role:** WAM Authorized User (Inventory Clerk)

**Description:** Inventory Clerk declines Stock Item quantity adjustment.

### **4.0 Transit Physical Inventory Count Line(s) to Review Needed Status**

**Actor/Role:** WAM

**Description:** WAM transits physical inventory count line(s) to Review Needed state.

<b>Business Object (Y/N)</b>	<b>Business Object</b>	<input type="text" value="W1-PICountLine"/>
------------------------------	------------------------	---

### **4.1 Transit Physical Inventory Count Master(s) to Completed Status**

**Actor/Role:** WAM

**Description:** WAM transits physical inventory count master(s) to Complete state.

<b>Process Plug-in enabled (Y/N)</b>	<b>Available Algorithm(s):</b>	<input type="text" value="W1-TRPICTMSR (Transition Physical Inventory Count Master)"/>
--------------------------------------	--------------------------------	--

<b>Business Object (Y/N)</b>	<b>Business Object</b>	<input type="text" value="W1-PICountLine"/>
------------------------------	------------------------	---

### **4.2 Review First Count, Recount Results**

**Actor/Role:** WAM Authorized (Inventory Clerk)

**Description:** WAM Authorized User review first count and recount results.

Note: More often it will be Supervisor who does this review.

### **4.3 Request Adjust Stock Item Quantity**

**Actor/Role:** WAM Authorized User

**Description:** WAM Authorized User makes a request to adjust stock item quantity.

**4.4 Discard Count**

**Actor/Role:** WAM Authorized User(Inventory Clerk)

**Description:** WAM Authorized User makes a request to discard count.

**4.5 Transit Physical Inventory Count Master(s) to Canceled Status**

**Actor/Role:** WAM

**Description:** WAM transits physical inventory count master(s) to Cancel state.

<b>Process Plug-in enabled (Y/N)</b>	<b>Available Algorithm(s):</b>	W1-TRPIMSRCA (Transition all Physical Inventory Count Masters to Canceled)
--------------------------------------	--------------------------------	--

<b>Business Object (Y/N)</b>	<b>Business Object</b>	W1-PIHeader
		W1-PICountMaster

**4.6 Transit Physical Inventory Count Line(s) to Canceled Status**

**Actor/Role:** WAM

**Description:** WAM transits physical inventory count line(s) to Cancel state. During this process, WAM reverses the inventory adjustment Stock Transaction and the Financial Transactions made.

<b>Process Plug-in enabled (Y/N)</b>	<b>Available Algorithm(s):</b>	W1-TRPICLNCA (Transition all Physical Inventory Count Lines to Canceled)
		W1-TRPIHDR ( Transition Physical Inventory Header)
		W1-RVIADJFT (Reverse Inventory Adjustment Stock and Financial Transactions)

<b>Business Object (Y/N)</b>	<b>Business Object</b>	W1-PICountMaster
		W1-PICountLine

**4.7 Transit Physical Inventory Header to Completed Status**

**Actor/Role:** WAM

**Description:** WAM transits physical inventory header to Complete state.

**Process Plug-in enabled (Y/N)**      **Available Algorithm(s):**

W1-TRPIHDR ( Transition Physical Inventory Header)
--

**Business Object (Y/N)**      **Business Object**

W1-PICountMaster
W1-PIHeader

#### [4.8](#) Review Count Results

**Actor/Role:** WAM Authorized User (Inventory Clerk)

**Description:** WAM Authorized User review count results.



---

## Test Documentation related to the Current Process

ID	Document Name	Test Type

---

## Document Control

### Change Record

Date	Author	Version	Change Reference
10/09/2015	Barry DeMartini, Galina Polonsky	1	Initial Version
11/07/2018	Kimberley Herrala Scott		Reviewed
11/07/2018	Galina Polonsky		Reviewed, Approved

# Appendix

## Physical Inventory Header

Physical Inventory Header ✖

---

▾ Required Criteria <sup>?</sup>

Storeroom \*

Items to Create \*

Type Of Inventory \*

---

▸ Access Control

---

▾ Optional Criteria <sup>?</sup>

Starting Stock Code  🔍

Ending Stock Code  🔍

Starting Bin

Ending Bin

Vendor  🔍

Stock Item Category

ABC Class

Days Since Last Inventory

Minimum Total Value

Random